



lightswing

Installatiehandleiding Lightswing Single en Twin

Lees voor het installeren deze handleiding

NL

Installation guide for the Lightswing Single and Twin

Read this manual before installation

EN

Montageanleitung Lightswing Single und Twin

Lesen Sie vor de Montage diese Anleitung

DE

Instructions de montage Lightswing Single et Twin

Lisez ces instructions avant l'installation

FR



Introduction.

How the Lightswing works.

The Lightswing is an innovative hanging system for hanging lamps. With the Lightswing, hanging lamps cannot only be easily hung from the ceiling, but can also be easily moved along the ceiling – without having to drill more ugly holes. The Lightswing can be easily installed at your existing ceiling connection point. The Lightswing can be rotated horizontally and moved back and forth along the connection point. This allows you to hang up the light anywhere you want within a 1.6 m radius. You do not need to drill new holes in the ceiling if you move the table or change the layout of your room. The problem of ugly cable ducts and loose wires is now definitively over. In addition, you can also use the special Quick Release feature to temporarily disconnect the lamp from the Lightswing; for instance when you have a party.

Installation, maintenance and warranty.

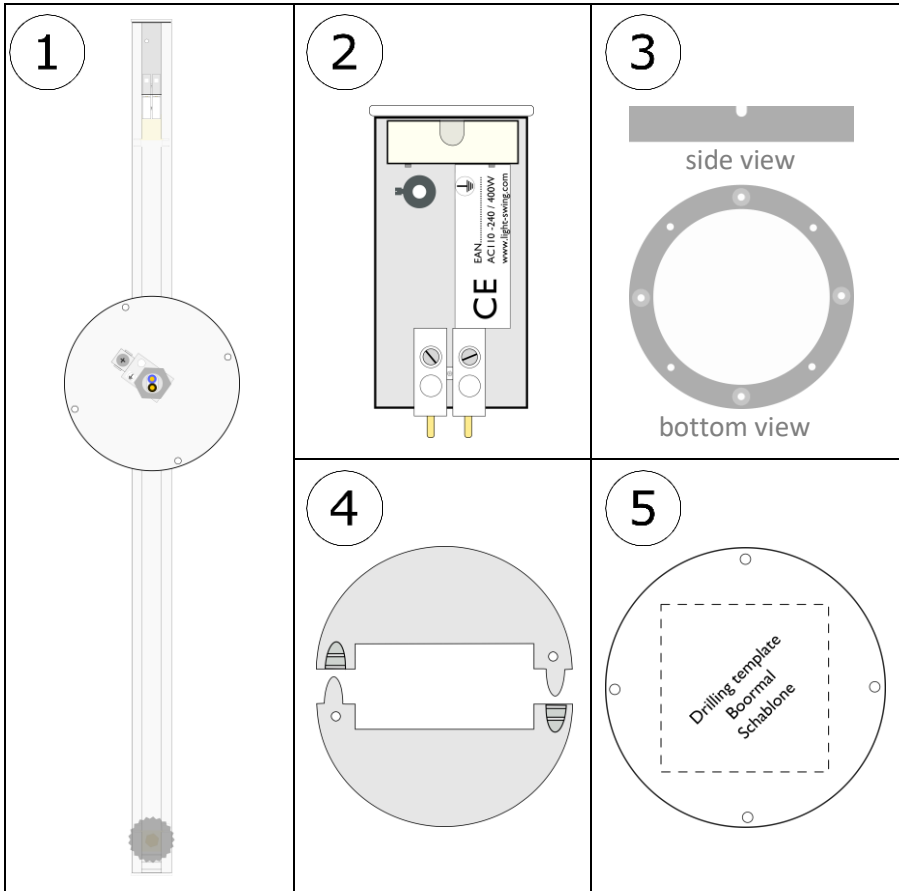
A connection to the mains is necessary to install the Lightswing. The Lightswing comes with a handy drilling template, ceiling cover and mounting ring, and is ready for installation. The Lightswing is a high-quality product which does not require maintenance. Do not install the Lightswing outside or in wet rooms. The warranty period is two years, in accordance with our terms and conditions.

Technical specifications.

Lightswing	Single	Twin
Voltage	230 V	230 V
Maximum power	400 Watt	600 Watt
Diameter	160 cm	150 cm
Lightswing rail length	91 cm	91 cm
Lightswing rail height	2 cm	2 cm
Lightswing rail width	3 cm	3 cm
Number of lamps	1	2
Maximum load	3,5 kilo	3,5 kilo per side
Diameter ceiling cover	12,5 cm	12,5 cm
Number of drill holes	4	4
Cover available	Ja	Ja
Overturn protection	Ja	Ja

Contents of the package.

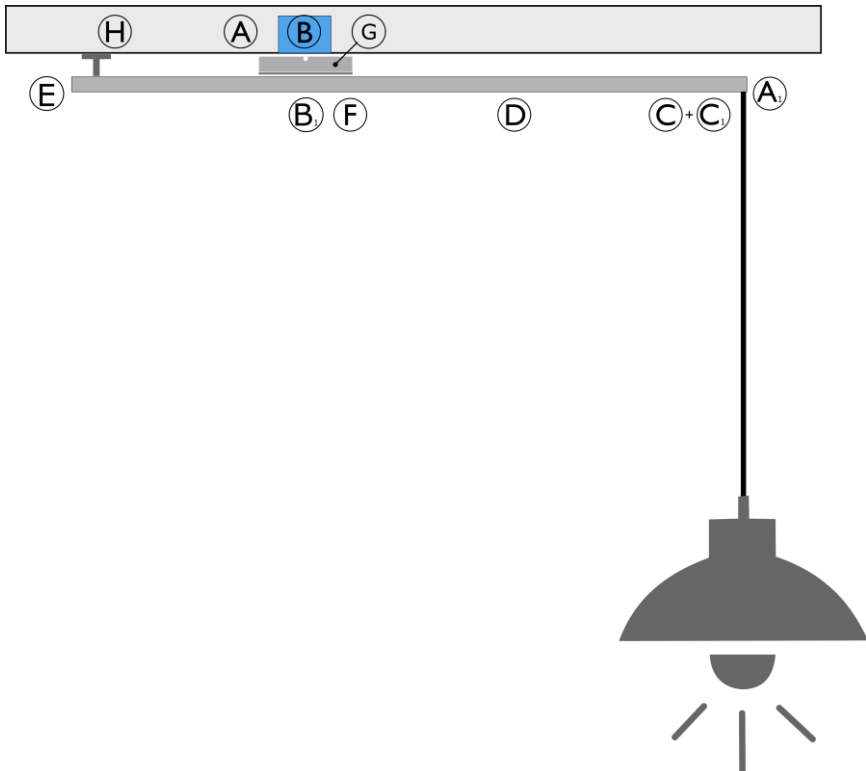
- 1. Lightswing hanging system
- 2. Quick release
- 3. Mounting ring
- 4. Ceiling covers
- 5. Drilling template



Assembly instructions Lightswing.

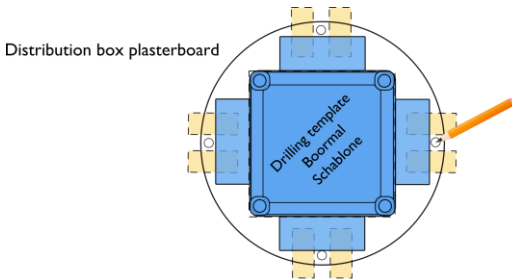
We recommend following these steps when installing the Lightswing:

- A. Drill the holds
- A1. Slide the Quick release from the Lightswing
- G (optional) Mounting ring (only to be used if the Lightswing cannot be mounted over the connection point)
- B. Connect the Lightswing
- B1. Mount the Lightswing
- C. Attach the lamp cord to the Quick release
- C1. Insert the Quick release
- D. Move the Lightswing
- E + H Adjust the Lightswing with the adjustment foot
- F. Install the covers



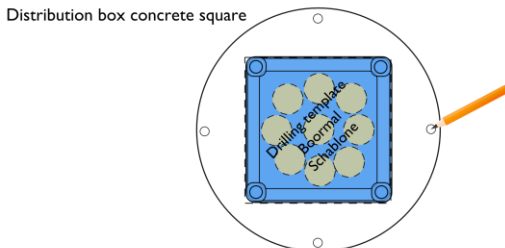
A Drilling the holes.

- Attention! First switch off the power for the connection point!
- Check that the connection point is able to permanently bear heavy loads.
- Use plugs that are suitable for the material to which the Lightswing is mounted.
- Make sure that no wiring or pipes can be cut or pinched.



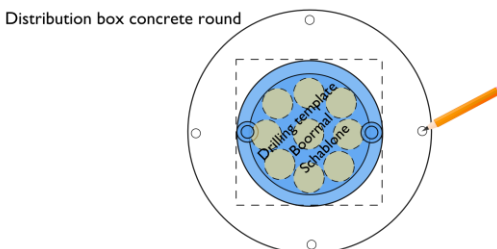
1 Determine the position of the drill holes.

Depending on the type of distribution box in the ceiling, determine the position of the drill holes using the supplied drilling template (5) and mark them onto the ceiling.



2. Drill the holes.

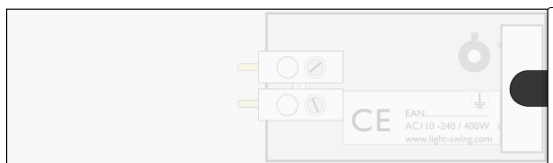
Drill the 4 marked ceiling holes using the correct drill and drill bit. Tip: Set the drill to a low speed setting in order to ensure a smooth hole. Insert the plugs in the drill holes and check that they are secure.



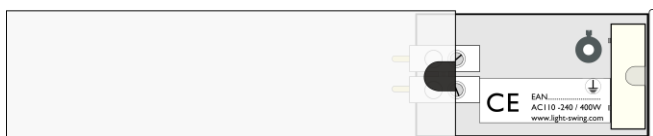
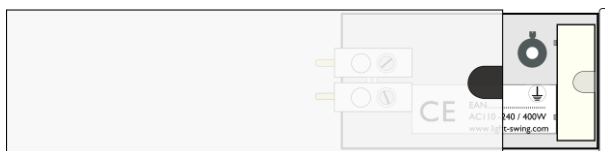
A1 Slide the Quick Release from the Lightswing.

- Slide the Quick Release from the Lightswing.
- The Quick Release is inserted in the Lightswing as a default.

Tip: Insert a small screwdriver into the cable hole and pull out the Quick Release.

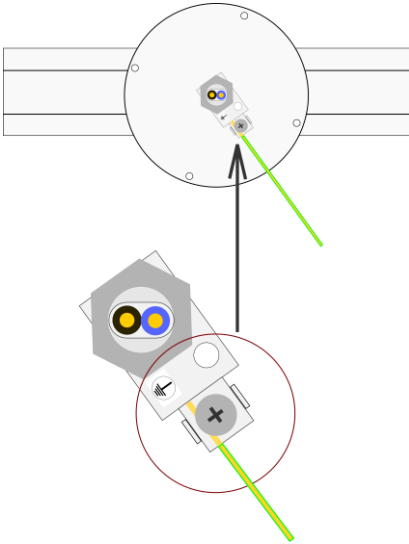


The Quick Release is inserted in the Lightswing as a default.



B Connect the Lightswing.

- Check again whether the power of the connecting wires is turned off.
- If applicable, remove the lid of the distribution box.
- If there is no ground wire, you can skip Step 1.



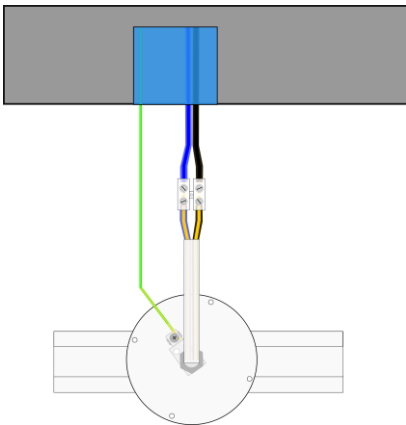
1 Connect the ground wire to the grounding lip on the Lightswing.

Push the yellow/green ground wire under the screw of the grounding lip and turn the screw with a cross/star screwdriver to secure the wire.

2 Connect the hook-up wire and neutral wire to the terminal block on the Lightswing.

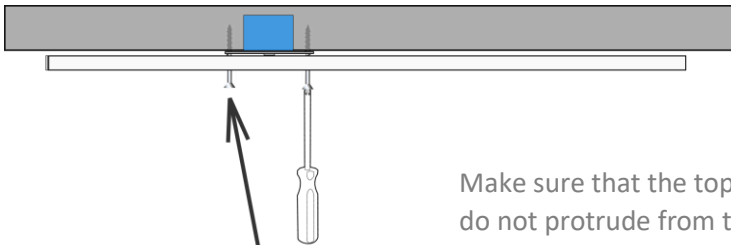
Insert the black (hook-up) wire into the screw terminal opposite the brown wire and securely tighten the screw of the terminal block.

Insert the blue (neutral) wire into the screw terminal opposite the blue wire and securely tighten the screw of the terminal block.

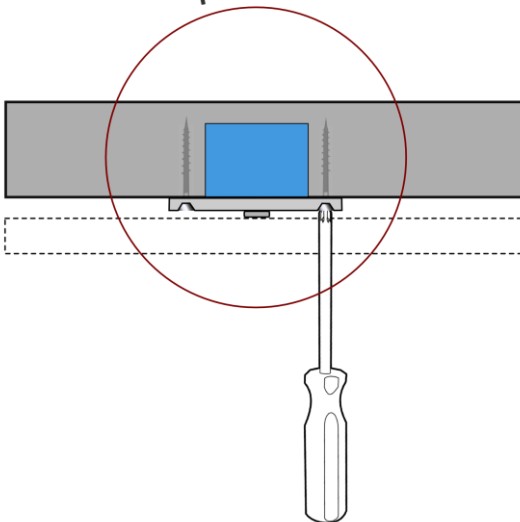


B1 Mount the Lightswing.

- Press the connected wires into the ceiling distribution box.
- Hold the Lightswing against the ceiling and make sure that the holes in the Lightswing's ceiling plate line up with the holes drilled into the ceiling.
- Make sure that no wires get trapped in between.
- Insert 4 screws in the pre-drilled holes.
- After screwing them in, check whether the Lightswing can rotate freely and can slide back and forth.

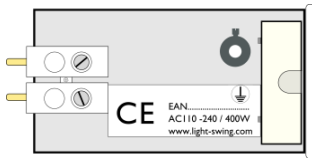


Make sure that the top of the screws do not protrude from the Lightswing's ceiling plate. Otherwise, the cover may not fit properly

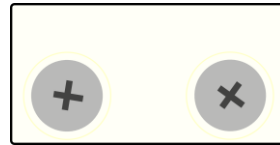


C Attach the lamp cord to the Quick release.

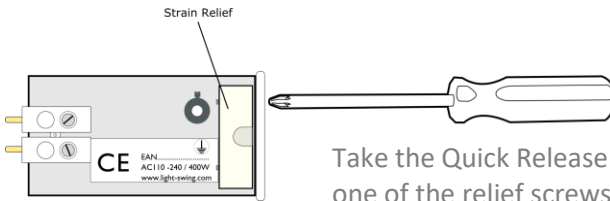
- Determine how high the lamp has to hang and mark this length on the lamp cord. * Tip: Hang the lamp approximately 75 cm above the table.
- Cut the lamp cord approximately 10 cm longer than the place marked.
- Strip the ends of the wires along a length of approximately 1 cm, to expose the copper.
- For further assembly, follow the steps below.
- Is it hard to slide out the Quick Release from the Lightswing? Gently squeeze the sides of the Quick Release.



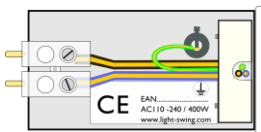
Quick release



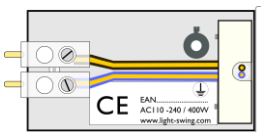
Front Quick release



Take the Quick Release and using a screwdriver loosen one of the relief screws and remove another screw, to be able to easily guide the lamp cord through..



If your lamp has a 3-wired connecting cable, connect it according to this illustration. After guiding the cord through, tighten the relief screws.



If your lamp has a 2-wired connecting cable, connect it according to this illustration. After guiding the cord through, tighten the relief screws.

C 1 Insert the Quick release.

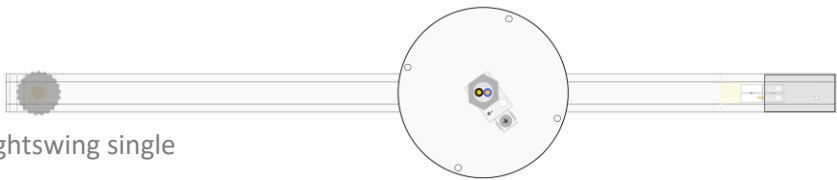
Once the lamp is connected to the Quick Release, it can be inserted into the Lightswing.



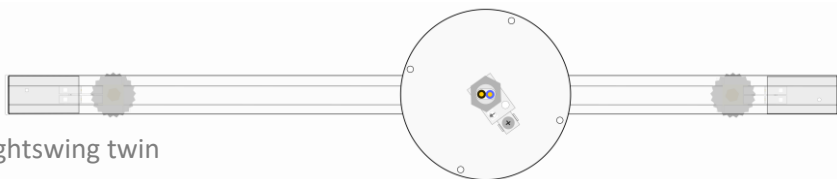
D Move the Lightswing.

- Always use two hands to slide/turn the Lightswing into the desired position. Make sure that no moving parts can rub against the ceiling.
- Don't forget to turn the adjusting screw slightly when you want to slide/move the Lightswing.

E Adjust the Lightswing



The weight of the lamp or unevenness in the ceiling can cause the Lightswing to sag slightly. You can adjust this using the Adjustment foot.



F Install the covers.

- Once the lamp is in position, you can use the covers (4) to hide the drill holes.

