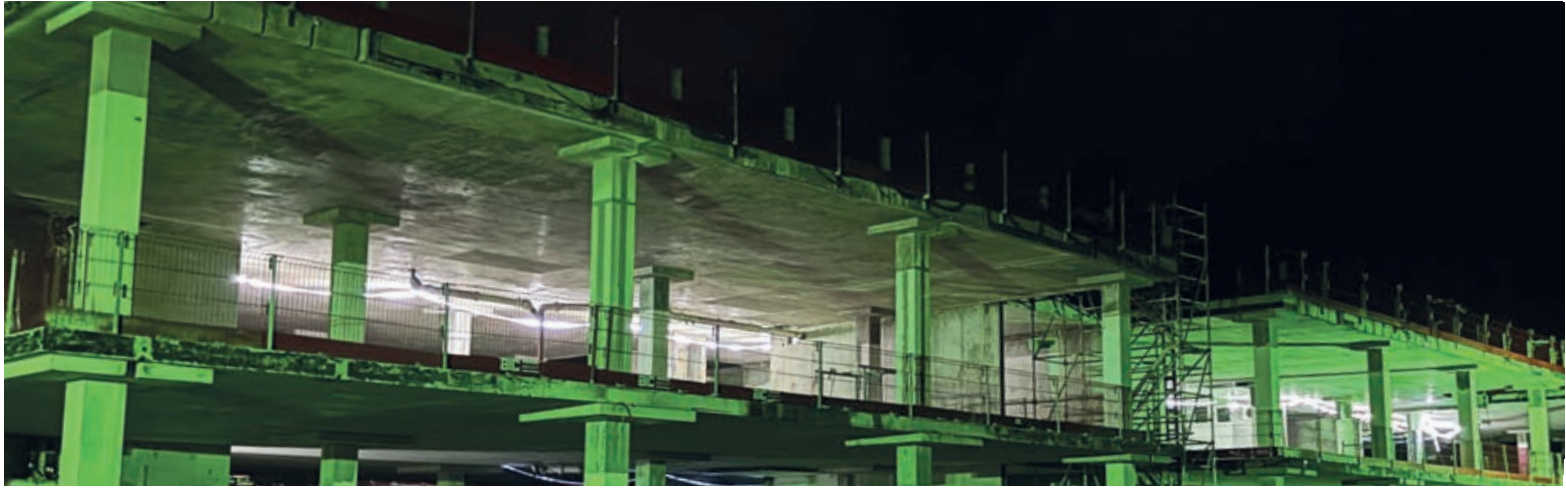




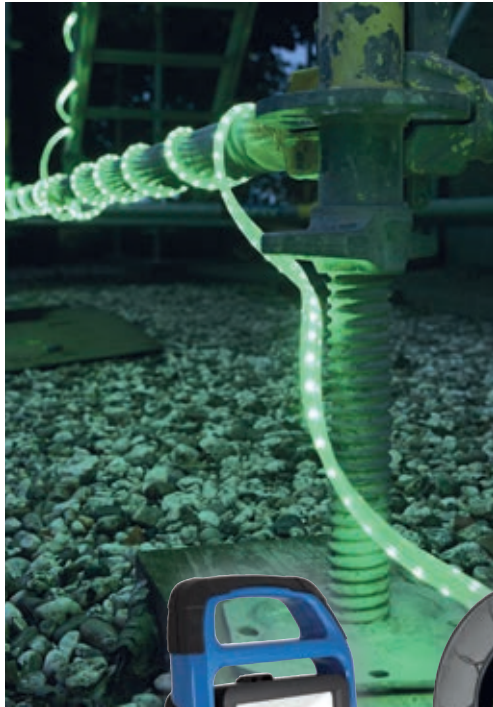
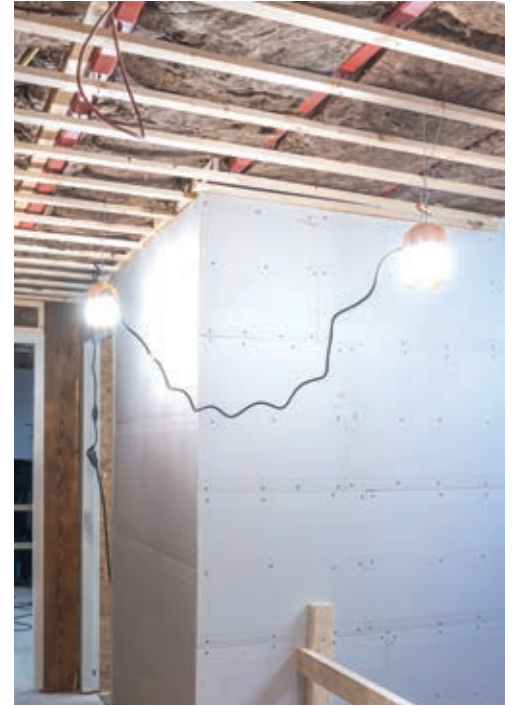
**UNDER CONSTRUCTION**

**ROBUST**  
Working Lights for Professionals









[bailey.nl](http://bailey.nl)



**ROBUST**  
Working Lights for Professionals

# ROBUST LED Rope



Flexible and handy light strings  
for temporary use.

Illuminates and protects



Construction site and job site



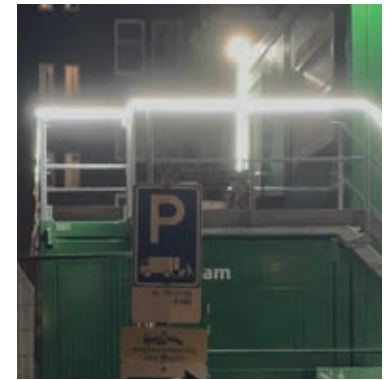
Tunnel and shaft



Attic and cellar



Scaffolding and crane



Fence and truss system

# ROBUST LED Rope



145637

## Robust LED Rope

Length 5 m, 380lm/m, 5W/m, 4000K, 120°, IP65

### Typical application

Crawl space, Stairwell, Attic & Cellar



Useful for relatively small spaces



145374

## Robust LED Rope

Length 50 m, 380lm/m, 5W/m, 4000K, 120°, IP65

### Typical application

Large construction sites and projects,  
Demarcation Scaffolding, Tunnels



Useful as temporary lighting on floors  
during construction



145829

## Robust LED Rope HO (High Output)

Length 25m, 760lm/m, 9W/m, 4000K, 120°, IP65, on Reel

### Typical application

(Construction) sites where more light is needed  
for finishing



More lumens, so more light per meter  
on the construction site



# ROBUST LED Rope



146507

## Robust LED Rope 2S (2 Sides)

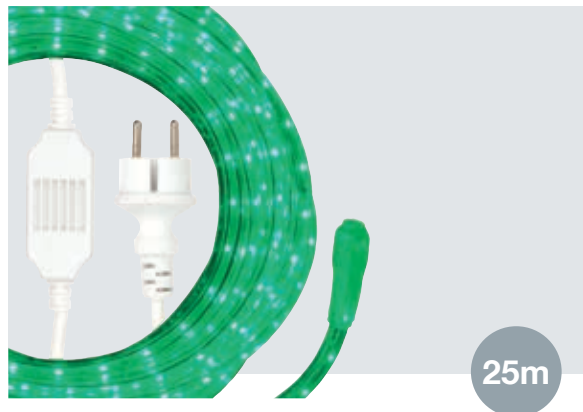
Length 20m, 840lm/m, 8W/m, 4000K, 240°, IP65, on Reel

### Typical application

(Construction) sites where more light is needed all around



Light on 2 sides of the hose, useful in open spaces (shafts)



145787

## Robust LED Rope Green

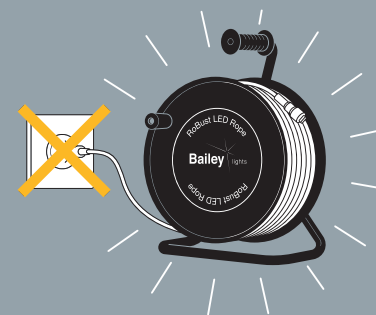
Length 25 m, 170lm/m, 5W/m, Green, 120°, IP65

### Typical application

Scaffolding demarcation, illuminating / securing aisles



Green light is friendlier to people and animals. Better safety detection.



### Warning

Do not leave burning on the roll due to overheating. Read manual before use

See website for available extra accessories.



ROBUST

**Bailey** lights  
for professionals



**bailey.nl**



# ROBUST LED Work

Practical multifunctional construction lights  
for targeted illumination of work.

Illuminates and protects



Construction site and workshop



New construction and  
renovation work



Ideal light for plastering and  
painting



# ROBUST LED Work



140794

## Robust LED Portable

20W, 1600lm, 4000K, rechargeable battery, CLIII

Replaceable battery

230V and 12V charger

Dimmable switch button

Magnet for mounting on steel surface



145742

## Robust LED Work Switch

50W, 3m cord + plug, color temperature and lumen adjustable, CLI

Adjustable power (30/50W)  
and colour (4000/6500K)

2 extra sockets, hanging hook, cord brackets

Adjustable stand and handle

144525

## Robust LED Work Switch

100W, 3m cord + plug, color temperature and lumen adjustable, CLI

Adjustable power (50/100W)  
and colour (4000/6500K)

3 extra sockets, hanging hook, cord brackets

Adjustable stand and handle

# ROBUST LED Corn

Heavy-duty work lighting for large and industrial work.

Illuminates and protects



Construction site and industrial estate



Tunnel and shaft



Events and roadworks



Available  
Fall 2024

## ROBUST LED Corn



146548

### Robust LED Corn Mobile

60W, 7200lm, 4000K, 1.80m cord + plug, IP64

Loopable (up to 10 pieces)

Hanging ring bolt M8

Handgrip and protective cage



146544

### Robust LED Corn Balloon Switch

250W, 30000lm, 4000K, 5m cord + plug, lumen adjustable, IP65

Adjustable power (100/180/250W)

Hanging ring bolt (M10) with snap hook

Balloon (light diffuser) supplied separately



146546

### RoBust Tripod for RoBust LED Corn Balloon

minimum height 142cm,  
maximum height 380cm, adjustable

With M10 screw hole

Easy to adjust to different heights

Carrying bag (146547) available for tripod  
with Corn



## And furthermore... Also consider the Bailey Combi-pack

Bailey has 4 combi-packs in which a number of renovation lampholders are combined with the same number of basic LED light sources. This way the handyman / installer / professional can quickly and directly provide the connection points with light. Available in various versions. Indispensable in every work van.



140818

### 10-Pack Combi

E27 Fitting  
+ LED 10W 4000K



145057

### 12-Pack Combi

E27 LH Connector  
+ LED 6W 2700K



144919

### 12-Pack Combi

E27 LH Connector  
+ LED 6W 4000K



146145

### 10-Pack Combi

E27 Lampholder Plug-in  
+ LED 8.5W Dimmable 2700K





ROBUST

**Bailey** lights  
for professionals

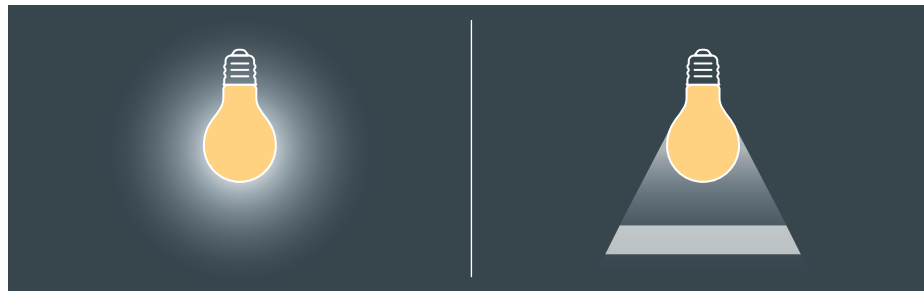
[bailey.nl](http://bailey.nl)

# Some rules of thumb about light

## Difference between Lumen (lm) and Lux (lx)

- Lumen is the value for all-round light. In other words, how much light a light source emits per second per watt in all directions. The more Lumen, the more light.
- Lux is the value for directional light. In other words, how much light is measured on a certain work surface.
- Simply put, a lamp always gives the same number of lumens, but the closer you place the light source to a wall, the more light on the wall/surface and the higher the lux value.

**Please note:** Lux values are theoretical values that are influenced by external factors such as other light, beam angle, reflection of the surface. Regular LED lamps, LED Corn and LED Rope are mainly used for general all-round light. Lux plays a smaller role there than Lumen.



Lumen

Lux

## How much light do I need for work

- For orientation (e.g. demarcation and aisles):  
**10lx**
- For general work (e.g. loading/unloading and signaling):  
**20lx**
- For simple assembly work (e.g. carpentry, masonry, tiling):  
**100lx**
- For specific construction work (e.g. installation of electrical and sanitary facilities):  
**200lx**
- For detailed work (e.g. painting, plastering, filling):  
**500lx**

## Light color

Roughly speaking, there are 3 light colors that are most commonly used in LED: 1800-2200K is extra warm (mood) light comparable to candlelight, 2700-3000K is warm white light comparable to old incandescent light bulbs, 4000K neutral white light. For LED construction lights, 4000K light is usually used.



1800 - 2200 Kelvin  
Extra Warm

2700 - 3000 Kelvin  
Warm White

4000 Kelvin  
Neutral White Light



# ROBUST

art.nr	watt	lumen	approximately lux at			
			1m	2m	3m	4m
<b>Work Switch</b> 144525	100W	9000	2.657	744	342	200
<b>Work Switch</b> 145742	50W	5000	1.350	390	187	112
<b>Work Portable</b> 140794	20W	1600	530	150	70	42
<b>Rope</b> 145637 / 145374	5W/m	380/m	160	59	25	16
<b>Rope</b> 145829	9W/m	760/m	295	100	50	30
<b>Rope 2S</b> 146507	8W/m	840/m	185	65	30	16
<b>Corn</b> 146544	250W	30.000	3.500	1.050	480	270
<b>Corn</b> 146548	60W	7.200	760	210	100	60
<b>Lamp Combi-pack</b> 140818	10W	935	95	25	15	10
<b>Lamp Combi-pack</b> 144919	6W	550	50	15	10	5

## IP Value

The IP value indicates how well a lighting fixture is resistant to water, dust and dirt.

The higher the value, the better protected against the ingress of dust and/or liquid.

- **IP-44** Dust and splash-proof.
- **IP-65** Dust and rainproof.

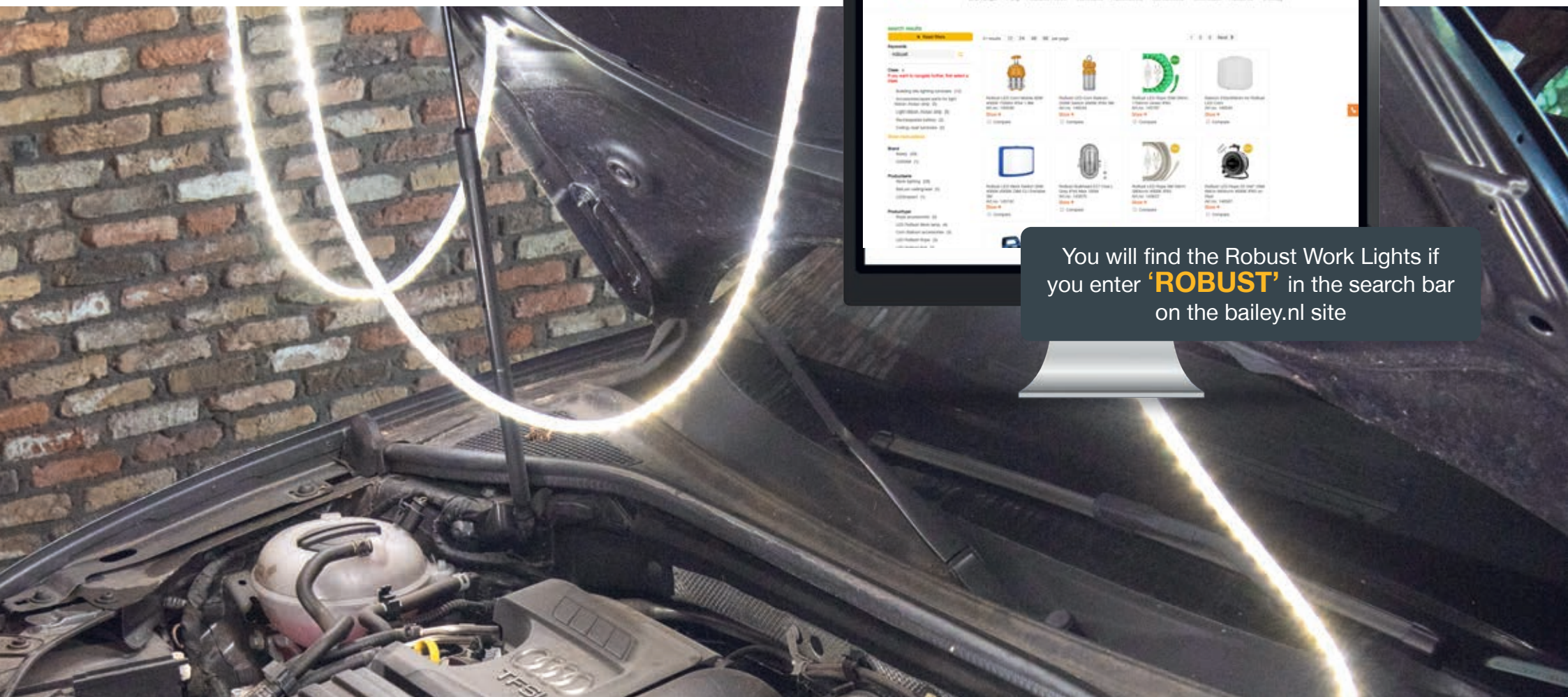
## IK value

The IK value of a lighting product is an indication of the impact resistance and shock resistance.

The higher the IK value, the better the impact resistance of the luminaire.

- **IK-08** Resistance to impacts of 5 Joules.  
Protected against vandalism.
- **IK-10** Resistance to impacts of 20 Joules.  
Resistant to vandalism.

The greater the risk of impacts during the work, the higher the desired IK value.



You will find the Robust Work Lights if you enter '**ROBUST**' in the search bar on the bailey.nl site